

# TEDDY'S SECRET ADVENTURES AT... SWADLINCOTE WOODLANDS

## TEDDY WALKS

(Start at the main car park opposite the ski slope)

**1** Teddy is going out to discover a secret woodland walk in Swadlincote. When he gets to the start he sees a fantastic looking play area but decides to go exploring first. He goes to the main path and walks up the slope towards the large yellow arches. He looks at the patterns that are in the arches then carries on past the green metal benches.

**CAN YOU SEE THE CATERPILLAR AND FROG IN THE BENCH?**



**2** The path ahead looks very long and straight to Teddy. He gets to a crossroads with a signpost and decides to turn right towards the viewpoint.

**3** Teddy sees a bridge marked No1 so decides to cross it and turns left – this is Skylark Walk. Teddy looks up into the sky to see if he can see any skylarks but it is too cloudy today so he carries on over another bridge.

**4** He turns left and sees a way-marker that says it was designed by children from Eureka Primary and Springfield Junior schools.

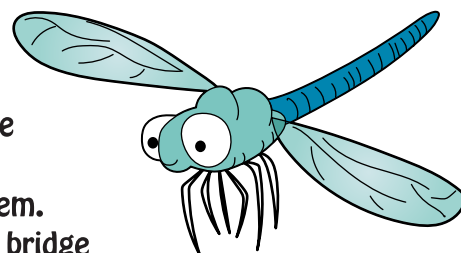
**CAN YOU SEE WHAT PICTURES ARE ON IT?**

There are lots of paths to explore in the woodlands, Teddy follows the path until he reaches another signpost that says Wetlands. 'Hmm, I wonder what I might see there' wonders Teddy.

**5** He turns right to follow the sign towards the wetlands. Be careful crossing over the road. Teddy stops, looks and listens before he crosses over the road.

To the right is a meadow called Salts Meadow where Teddy sits down and has a picnic, he tidies away his rubbish into his bag. He remembers that there used to be a shop called Salts in Swadlincote and decides to find out more about it at the library later.

Teddy rejoins the path to go over the bridge; he sees some more yellow posts with bulrushes in them. As he goes over the bridge he looks into the water and sees a dragonfly skipping about over the water.



**6** He carries on over the bridge and gets to a large circular way-finder.

**TOUCH IT AND LOOK AT IT. WHAT PICTURES AND PATTERNS CAN YOU SEE?**

After spending some time looking around Teddy turns around and retraces his steps back over the road onto the path.

**7** Teddy heads back into the woodland and sees an ivy covered circle; he wanders in to find out what's in there. 'Wow! A time capsule, I wonder what is inside it?' He spends some time reading the writing about the time capsule then turns right to go over another bridge.



# COLOUR TEDDY IN...



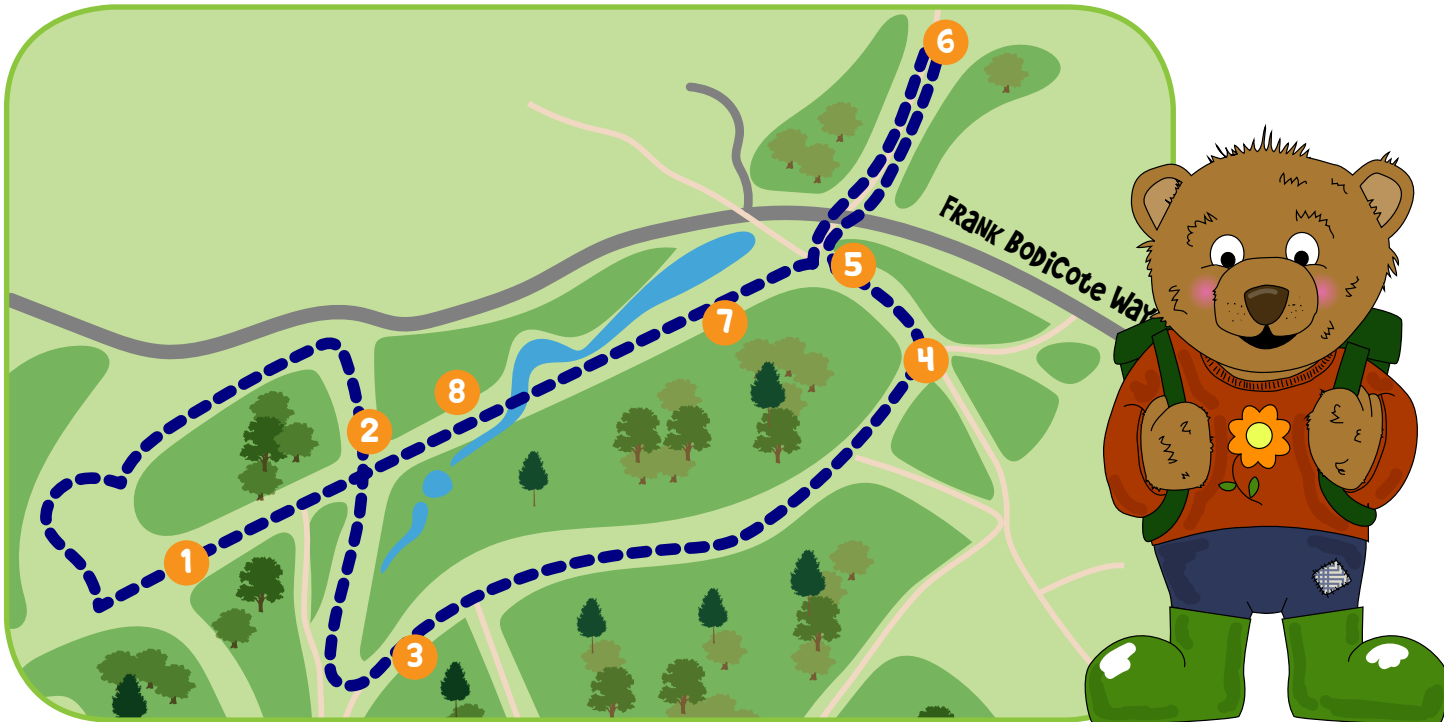
'There are a lot of bridges here' thinks Teddy as he goes over another bridge. He sees another waymarker – this time done by Castle Gresley Infants and Belmont Juniors. He takes a look and sees a snail, an owl, a dragonfly and some beetles.

**8** Teddy follows the path passing another waymarker from Stanton Village School and Woodville Infants. The path leads him all the way back to the car park.

*There is also a signpost for Eureka Park, if you have time you can download the walk or come back another day.*

**HOW MANY BRIDGES DID YOU GO OVER?**

**FOLLOW TEDDY'S OTHER ADVENTURES AT...  
ELVASTON CASTLE,  
ROSLISTON FORESTRY CENTRE,  
HILTON GRAVEL PITS  
AND EUREKA PARK**



TO DOWNLOAD ANY OF OUR WALKS AND FOR MORE INFORMATION GO TO

[www.southderbyshire.gov.uk](http://www.southderbyshire.gov.uk)