

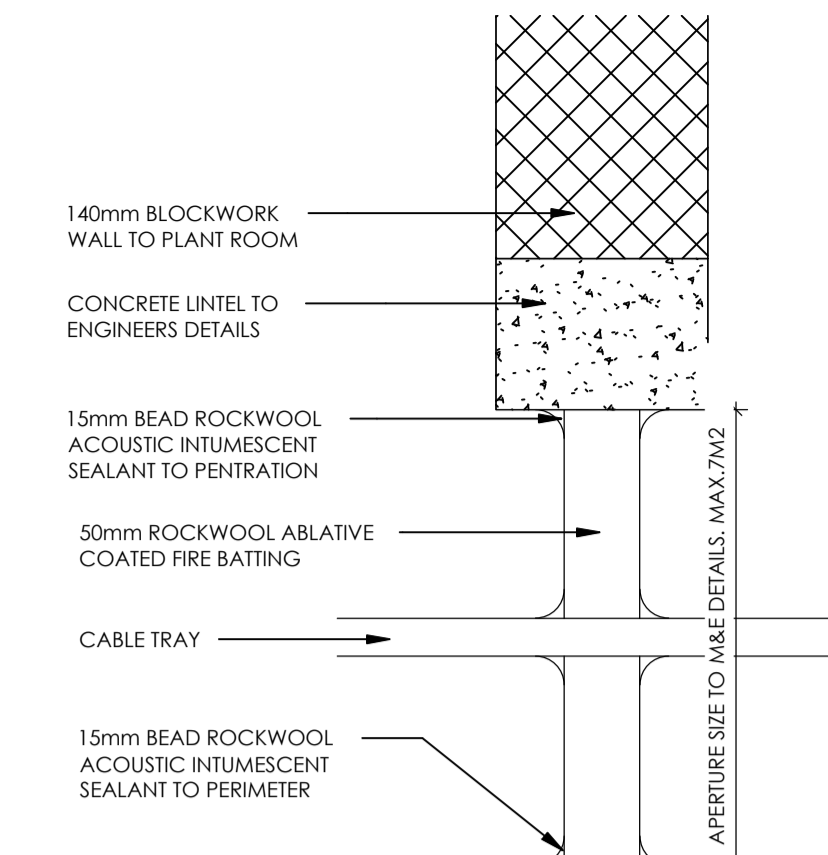
ALL SIGNAGE REFERENCES TAKEN FROM STOCKSIGNS CATALOGUE.
ALL SCREW HEADS TO BE WHITE AND EXTERNAL DOOR SIGNS TO HAVE DOUBLE SIDED TAPE TO PREVENT BOWING.

REF.	DESCRIPTION	IMAGE
N1	GENERAL FIRE ACTION NOTICE	
N4	DIRECTION ARROW, WHITE ARROW, BLUE BACKGROUND, CIRCLE	
N5.1	FIRE ESCAPE KEEP CLEAR, SELF ADHESIVE (EXTERNAL)	
N6	FIRE DOOR KEEP CLOSED, SELF ADHESIVE	
N8	FIRE DOOR KEEP LOCKED	
N11	FIRE ALARM CALL POINT	
N12	FIRE EXTINGUISHER, SELF ADHESIVE	

REF.	DESCRIPTION	IMAGE
N18	NO ENTRY, CIRCLE	
N20	FIRE ALARM CONTROL PANEL INSIDE	
N21	DIRECTIONAL FIRE EXIT, RH, HUNG INFRONT OF POS SIGNAGE	
N22.1	DIRECTIONAL FIRE EXIT, LH, SELF ADHESIVE	
N22.2	DIRECTIONAL FIRE EXIT, LH, SELF ADHESIVE	
N25	ILLUMINATED FIRE EXIT, WALL MOUNTED	
N26.1	PUSH BAR TO OPEN, SELF ADHESIVE	

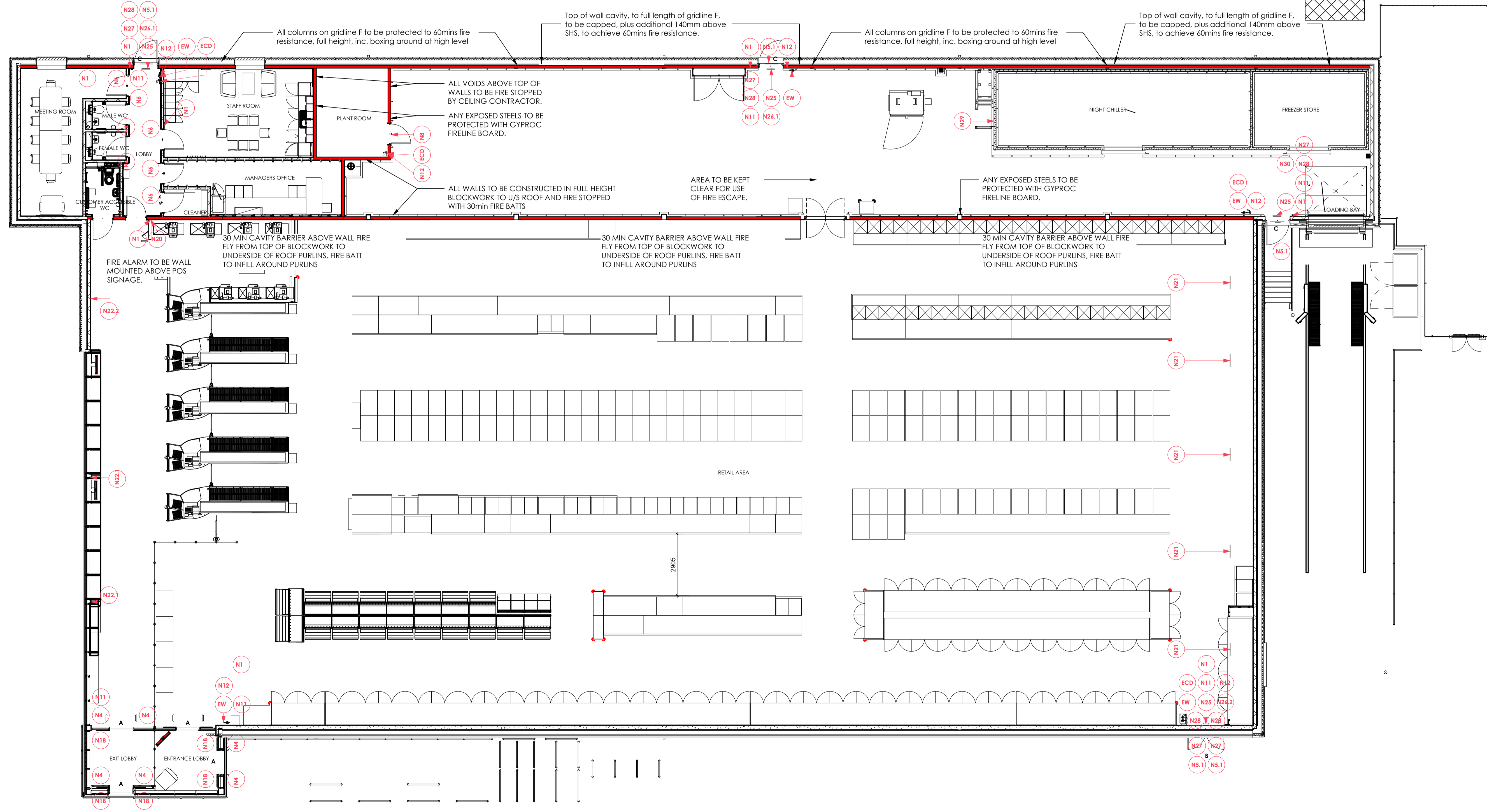
REF.	DESCRIPTION	IMAGE
N26.2	2 X PUSH BAR TO OPEN, SELF ADHESIVE (DOUBLE DOOR)	
N27	DIRECTIONAL FIRE EXIT, DOWN	
N28	EMERGENCY ESCAPE KEEP CLEAR - "EMERGENCY EXIT THIS AREA MUST BE KEPT CLEAR AT ALL TIMES"	
N29	AUTHORISED PERSONNEL, SELF ADHESIVE	
N30	PRESS LEVER TO OPEN	
N31	THIS STORE IS FITTED WITH A CO2 REFRIGERATION SYSTEM	

FIRE EXTINGUISHER SCHEDULE					
ROOM	Ref.	TYPE	LABEL COLOUR	MOUNTING	COMMENTS
LOBBY	ECD	CARBON DIOXIDE	BLACK	WALL MOUNTED	ADJACENT TO DE4
PLANT ROOM	ECD	CARBON DIOXIDE	BLACK	WALL MOUNTED	ADJACENT TO DG9
RETAIL AREA	ECD	CARBON DIOXIDE	BLACK	ON STAND	ADJACENT TO DE3
WAREHOUSE (INC. LOADING)	ECD	CARBON DIOXIDE	BLACK	WALL MOUNTED	ADJACENT TO DE6
4					
LOBBY	EW	WATER (HYDROSPRAY)	RED	WALL MOUNTED	ADJACENT TO DE4
RETAIL AREA	EW	WATER (HYDROSPRAY)	RED	WALL MOUNTED	ADJACENT TO DG1
RETAIL AREA	EW	WATER (HYDROSPRAY)	RED	ON STAND	ADJACENT TO DE3
WAREHOUSE (INC. LOADING)	EW	WATER (HYDROSPRAY)	RED	WALL MOUNTED	ADJACENT TO DE6
WAREHOUSE (INC. LOADING)	EW	WATER (HYDROSPRAY)	RED	WALL MOUNTED	ADJACENT TO DE5
5					
TOTAL: 9					



TYPICAL PLANT ROOM PENETRATION
SCALE: 1:5

REV	DATE	DESCRIPTION	DRW	CHK
P01	28.04.2024	Initial Construction Issue	SI	DM
C01	10.07.2024	Construction Issue, Steelwork added.	PS	CB
C02	12.09.2024	Project transferred to THP	DM	DM
C03	16.01.2025	Fire exit sign omitted from above warehouse/retail door. Fire protection to gridline F noted.	DM	DM



NOTE:
FIRE ALARM/DETECTION SYSTEM TO COMPLY WITH BS 5839 PART 1 - 2017
EMERGENCY LIGHTING SYSTEM TO COMPLY WITH BS 5224 PART 1 - 2018
FIRE EXIT AND ASSORTED SIGNAGE TO COMPLY WITH BS 5499 PART 1 & 4

ESCAPE WIDTH ARE BASED ON A PROPOSED SALES FLOOR AREA OF 1315M² AND AN OCCUPANCY OF 1 PERSON PER 5M² (GIVING TOTAL OF 263 PERSONS)

CLEAR OPENING WIDTH TO DOORS
A = 1100MM CLEAR
B = 1315MM CLEAR
C = 1016MM CLEAR

ALL AUTOMATIC DOORS TO BE PROVIDED WITH A FAIL SAFE DEVICE TO BS 7036: PART 2 1996 TO ALLOW DOORS TO OPEN IN THE EVENT OF POWER FAILURE OR AN ACTIVATION OF THE FIRE ALARM.
ALL EMERGENCY LIGHTING LOCATIONS TO THE MAIN CEILING GRID TO BE TO M&E CONSULTANTS REQUIREMENTS

NOTE:
FIRE SAFETY SIGNAGE TO COMPLY WITH BS 5499.
FIRE PLAN AND AISLE WIDTHS TO BE COORDINATED WITH THE LATEST MERCHANDISING DRAWINGS.

Client
ALDI - Aldi Stores Ltd.

Project Title
ALDI FOODSTORE

Project Address
DERBY RD, HILTON

Drawing Title
PROPOSED FIRE PLAN

Job No.	Originator	Zone	Level	Type	Role
E1621	THPW	XX	00	DR	A
System Classification	Drawing No.	Suitability	Revision		
PM_80_50_30-0001	A4	C03			
Drawn	Checked	Date	Scale	Size	
DM	DM	12.09.2024	As indicated	A1	

Wakefield, WF1 3QA
t. 01924 291800

Conyers Warehouse, 77 Dale Street,
Manchester, M1 2HG
t. 0161 2388555

The Old Rectory, 79 High Street,
Newport Pagnell, MK18 8AB
t. 01908 211577

101 London Road,
Reading, RG1 3BT
t. 0118 950770

10 Gees Court, St Christophers Place,
London, W1U 1JJ
t. 0207 4091215

THP Project No. 20712

THE HARRIS PARTNERSHIP
ARCHITECTS
www.harrispartnership.com

GF PROPOSED FIRE PLAN
1 : 100