



**South**  
**Derbyshire**  
District Council  
Planning and  
Strategic  
Housing

# **South Derbyshire**

## **Cycle Network**

### **Draft Supplementary**

### **Planning Document**

**April 2024**

## Introduction

- 1 A Supplementary Planning Document (SPD) is intended to provide greater detail on the planning policies that have been adopted in the South Derbyshire Local Plan. Upon adoption this SPD will become a material consideration in the determination of planning applications.
- 2 The purpose of this SPD is to assist in guiding the negotiation of developer contributions toward the provision and enhancement of the Derbyshire Key Cycling Network (KCN) and Local Cycling Network (LCN) within the District where a need is identified under South Derbyshire Local Plan Part 1 Policy INF2.
3. Existing and proposed routes comprise both off-highway and on-highway links. Off-highway links are to be designed to accommodate a range of users and abilities including cyclists, walkers and horse riders, where practical. Most motorised forms of transport are excluded from off-highway routes, mobility scooters being an exception. Proposed on-highway routes can only be brought into being on the basis of the roads being made sufficiently safe and well maintained for that purpose.
- 4 It should be noted that the provision of cycle infrastructure as part of the operation of the highway network is the responsibility of Derbyshire County Council. As highways authority the County Council advises the District Council on the transport elements of planning applications. The East Midlands Combined County Mayoral Authority also has transport powers, including responsibility for the Local Cycling and Walking Infrastructure Plan (LCWIP) (see below).
- 5 Developer contributions will not be the only means of securing the delivery of cycle routes and the Council will continue to work with partners in identifying all available opportunities to enable the expansion and improvement of the network.
- 6 The policy context, including the relevant parts of Local Plan Part 1, Policy INF2 and an explanation of the Derbyshire KCN and LCN are set out below. Mapping showing the completed and proposed links in the KCN and LCN is included at Appendix B.
- 7 This SPD replaces the 'South Derbyshire Cycling Strategy' Supplementary Planning Guidance (2001).

## Policy Context

### South Derbyshire Local Plan

- 8 Section 38(6) of the Planning and Compulsory Purchase Act 2004 states that decisions on planning applications must be taken in accordance with the development plan unless there are material considerations that indicate otherwise. The development plan for South Derbyshire is the Local Plan Parts 1 and 2, adopted in June 2016 and November 2017 respectively.
- 9 The basis for the production of this Supplementary Planning Guidance is Local Plan Part 1 Policy INF2, which states that:
- 'A i) Planning permission will be granted for development where: ....*
- 'b) appropriate provision is made for safe and convenient access to and within the development for pedestrians, cyclists, public transport users and the private car.....;*
- ii) In order to achieve this, the Council will secure, through negotiation, the provision by developers of contributions towards off-site works where needed.'*
- B i) The Council will work in partnership with County Councils, neighbouring local authorities, the National Forest Company, charitable organisations, landowners and developers to secure the expansion, improvement and protection of walking and cycling networks, including public rights of way, cycle routes, greenways and supporting infrastructure. Routes should be coherent, direct, continuous, safe, secure and attractive and should contribute to the wider green infrastructure network wherever possible.*
- ii) Where a need is identified in Part 1 of this policy, the Council will seek to negotiate the provision by developers of contributions toward new, or the enhancement of existing, walking and cycling routes and supporting infrastructure.*
- iii) Development that is likely to prejudice the use of disused railway lines or canals for walking, cycling or horse riding will only be permitted, where it can be demonstrated that there would be no practical prospect of implementation in the future.*
- iv) Cycling and greenway network proposals will be identified in Supplementary Planning Documents.'*
- 10 Other Local Plan Part 1 Policies relevant to provision for cyclists are S6: 'Sustainable Access', which establishes the strategic principles underpinning transport policy in the plan and BNE1: 'Design Excellence', which includes the design considerations to be taken into account in providing cycling infrastructure.

### National Planning Policy Framework

11 National planning policy is a material consideration in the consideration of planning applications. Current national planning policy is set out mainly within the National Planning Policy Framework (NPPF).

12 Paragraph 110 states that:

*‘Planning policies should....*

*‘provide for attractive and well designed walking and cycling networks with supporting facilities such as secure cycle parking (drawing on Local Cycling and Walking Infrastructure Plans)’*

13 Paragraph 114 states that:

*‘In assessing ...specific applications for development, it should be ensured that...*

*‘a) appropriate opportunities to promote sustainable transport modes can be – or have been – taken up, given the type of development and its location;*

*b) safe and suitable access to the site can be achieved for all users;’*

14 In paragraph 116 it states that:

*‘Within this context, applications for development should:*

*‘a) give priority first to pedestrian and cycle movements, both within the scheme and with neighbouring areas;...*

*b) address the needs of people with disabilities and reduced mobility in relation to all modes of transport;...*

*c) create places that are safe, secure and attractive – which minimise the scope for conflicts between pedestrians, cyclists and vehicles, avoid unnecessary street clutter, and respond to local character and design standards;’*

### Local Cycling and Walking Infrastructure Plan (LCWIP)

15 The national Cycling and Walking Investment Strategy forms part of the Infrastructure Act 2015, setting targets to increase levels of cycling and walking. Elements of the Infrastructure Act are required to have a programme of investment and LCWIPs provide evidence of capital investment needed for cycling and walking, providing partners with a strong position to apply for future funding streams including levying funds from new development. It is intended that the LCWIP should form an integral part of future policies and strategies as identified in the NPPF (see above).

- 16 The LCWIP identifies prioritised route improvements across the Local Enterprise Partnership area in a consistent way. Only strategic cycle routes are included, which within South Derbyshire mainly comprise priorities extracted from Derbyshire County Council's KCN plan. (see para 18).

#### Derbyshire Local Transport Plan (LTP), 2011-2026

- 17 The Derbyshire LTP seeks to improve walking and cycling provision.

#### Derbyshire Cycling Plan 2016-2030

- 18 The Derbyshire Cycling Plan aims to improve cycling connectivity and integration to encourage more cycling for leisure, active travel, commuting and sport. Among the strategic aims is the improvement of infrastructure connectivity, both on and off road.

#### Derbyshire Key and Local Cycle Network

- 19 The County Council has approved a Key Cycle Network (KCN) of strategic routes covering the whole of Derbyshire.
- 20 The KCN consists of the most important routes for commuting, tourism and leisure. These routes generally connect key towns and neighbouring cities and provide longer distance leisure cycling loops supporting the wider visitor economy.
- 21 The County Council has also identified a Local Cycle Network (LCN) comprising local connections from the KCN to key locations such as a transport interchange, employment, education, health, retail and leisure/visitor destinations.
- 22 Both the KCN and LCN routes include connections to neighbouring areas, to facilitate sustainable cross-boundary movement.
- 23 The approved KCN was determined following a formal process of stakeholder engagement conducted by the County Council and is thus not subject to further change in connection with the production of this SPD. However, suggestions for changes to proposed LCN routes are invited as part of this consultation.
- 24 The completed and proposed KCN and LCN links are shown on the plans at Appendix B.
- 25 Where possible routes are to be designed to accommodate all users and abilities including walkers and equestrians, where practical. Some parts of the networks are already in place whilst others have yet to be implemented.
- 26 It should be noted that the route alignments shown are indicative and subject to engineering feasibility, design, costing, land ownership and other considerations.

- 27 Routes will be designed and constructed with reference to current design specifications, the most recent of which are listed at Appendix A. Width, surface, lighting and other aspects will be assessed on a case-by-case basis so that routes are fit for purpose for the given location and are sympathetic to the surrounding characteristics and expected users.

## Contacts

- 28 For further assistance or clarification of multi-user route provision policy, please contact the Planning Department at the email address below, or telephone 01283 228706. If your query relates to a specific planning application, please contact the Development Management team member dealing with your application or email: [planning@southderbyshire.gov.uk](mailto:planning@southderbyshire.gov.uk)

## References

- |  |                  |
|--|------------------|
| Derbyshire County Council Report to Cabinet - 'Key Cycle Network Development and Funding Opportunities'            | 16 January, 2020 |
| <a href="#">Derbyshire County Council</a>  |                  |
| National Planning Policy Framework   | December 2023    |
| <a href="https://www.publishing.service.gov.uk">National Planning Policy Framework (publishing.service.gov.uk)</a> |                  |
| South Derbyshire Local Plan Part 1, South Derbyshire District Council  | 13 June, 2016    |
| <a href="#">Adopted Local Plan   South Derbyshire District Council</a>   |                  |
| South Derbyshire Design Guide, South Derbyshire District Council   | November, 2017   |
| <a href="#">Design SPD v2.3 standard res FINAL 1 (16).pdf</a>  |                  |
| Derbyshire Local Transport Plan, Derbyshire County Council   | April, 2011      |
| <a href="#">Local Transport Plan Three - Derbyshire County Council</a>   |                  |
| D2N2 Local Cycle and Walking Infrastructure Plan   | April 2021       |
| <a href="#">d2n2localcyclingandwalkinginfrastructureplan.pdf (nottinghamshire.gov.uk)</a>                          |                  |

## APPENDIX A: Design Guidance

Department for Transport LTN 1/20 Cycle Infrastructure Design July 2020

[Cycle infrastructure design \(LTN 1/20\) - GOV.UK \(www.gov.uk\)](https://www.gov.uk/government/publications/cycle-infrastructure-design-ltn-1-20)

Sustrans Traffic Free Routes and Greenway Design Guide, November 2019

[Sustrans traffic-free routes and greenways design guide - Sustrans.org.uk](https://www.sustrans.org.uk/traffic-free-routes-and-greenways-design-guide)

Sustrans Introductory Guide to Low Traffic Neighbourhood Design, May 2023

[An introductory guide to low traffic neighbourhood design - Sustrans.org.uk](https://www.sustrans.org.uk/introductory-guide-to-low-traffic-neighbourhood-design)

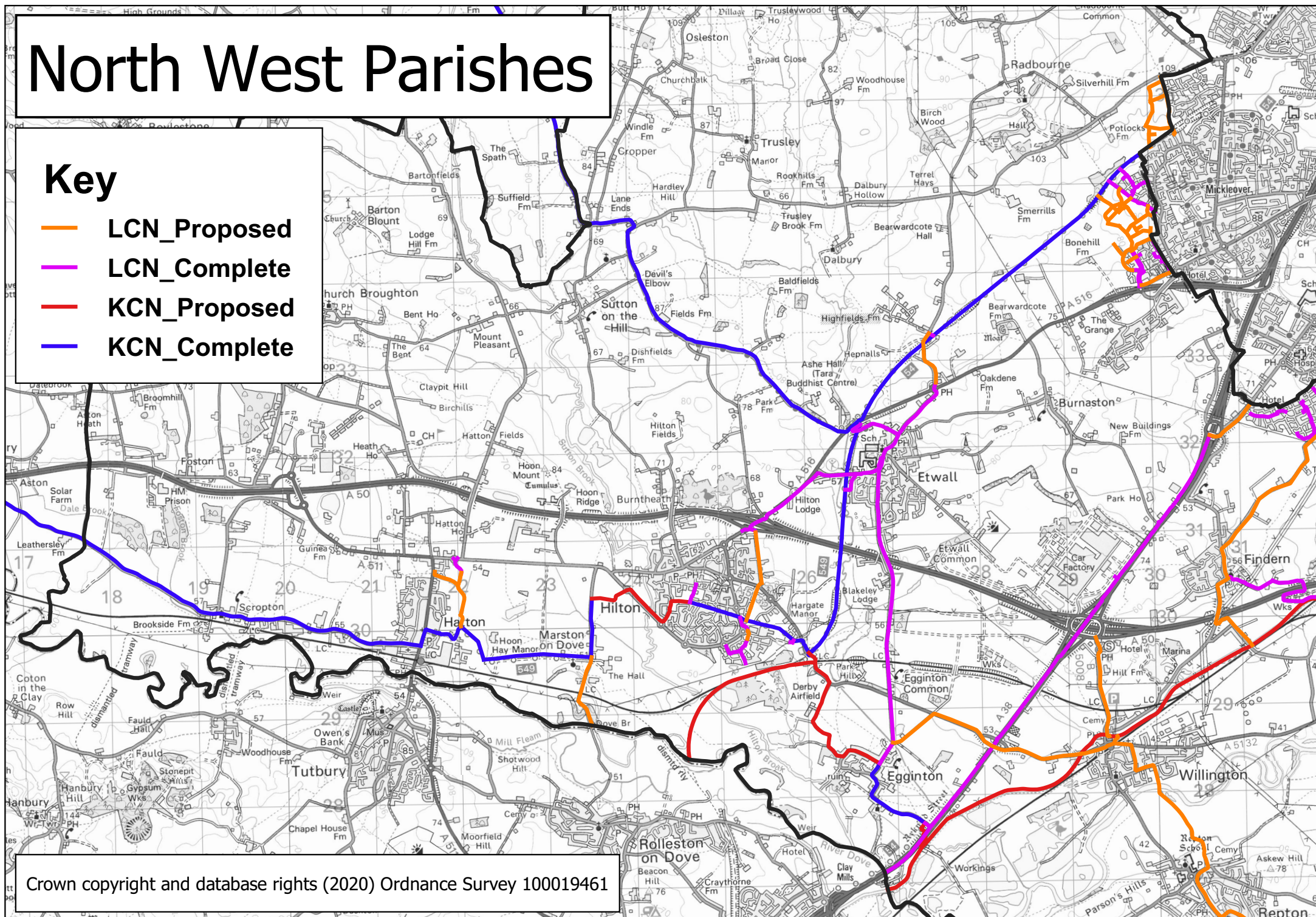
## APPENDIX B: Mapping



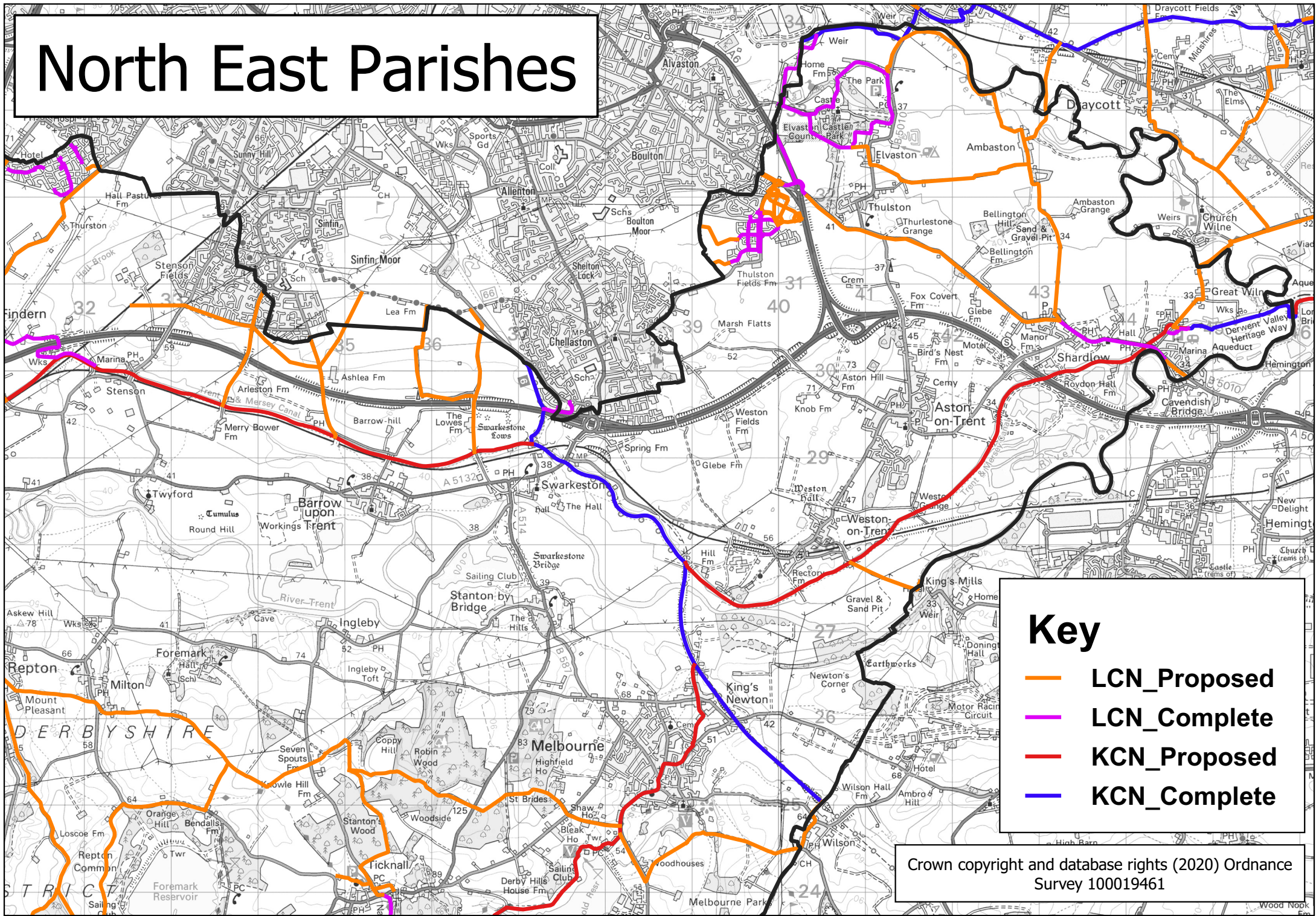
# North West Parishes

## Key

- LCN\_Proposed
- LCN\_Complete
- KCN\_Proposed
- KCN\_Complete



# North East Parishes

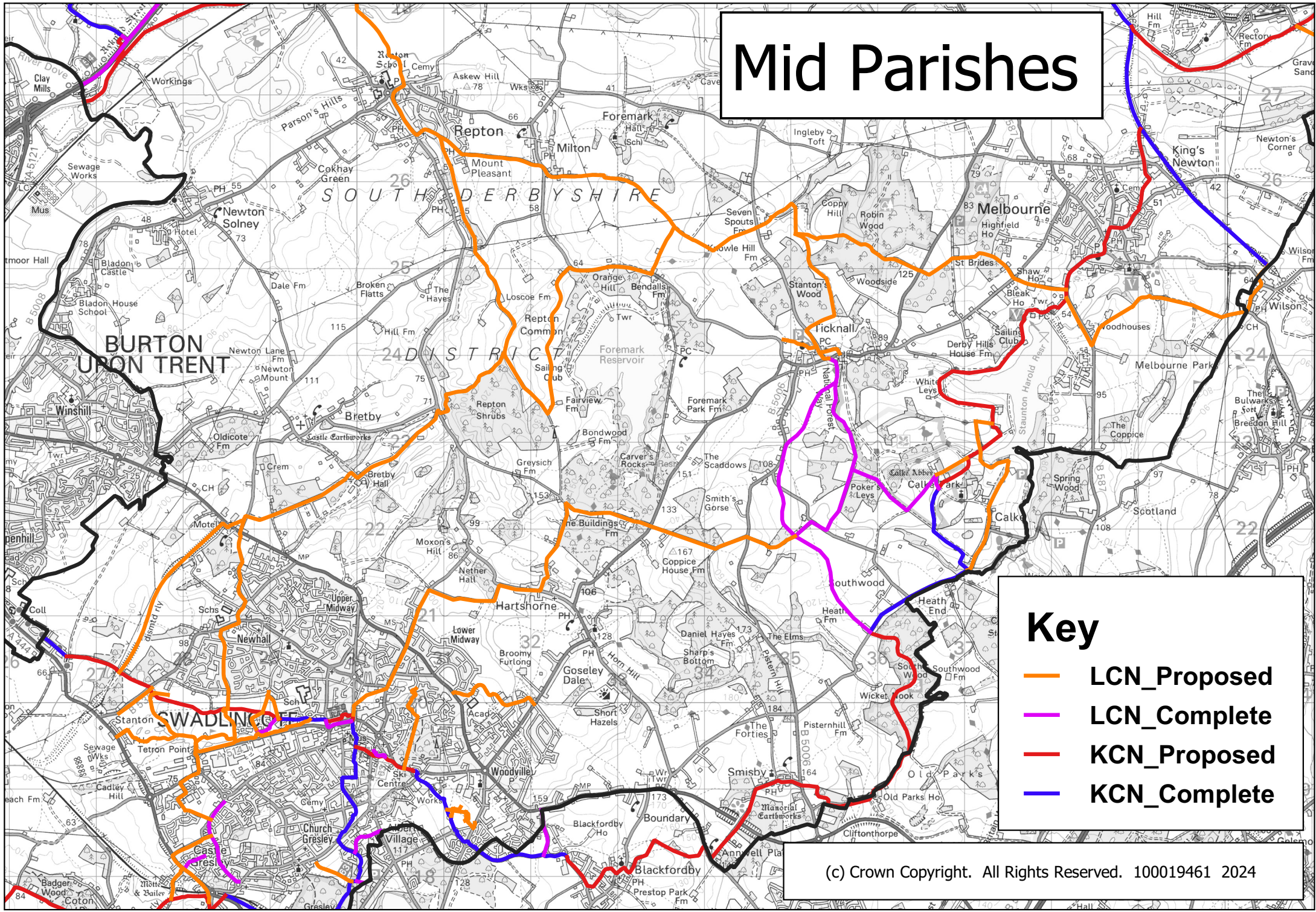


### Key

- LCN\_Proposed
- LCN\_Complete
- KCN\_Proposed
- KCN\_Complete

Crown copyright and database rights (2020) Ordnance Survey 100019461

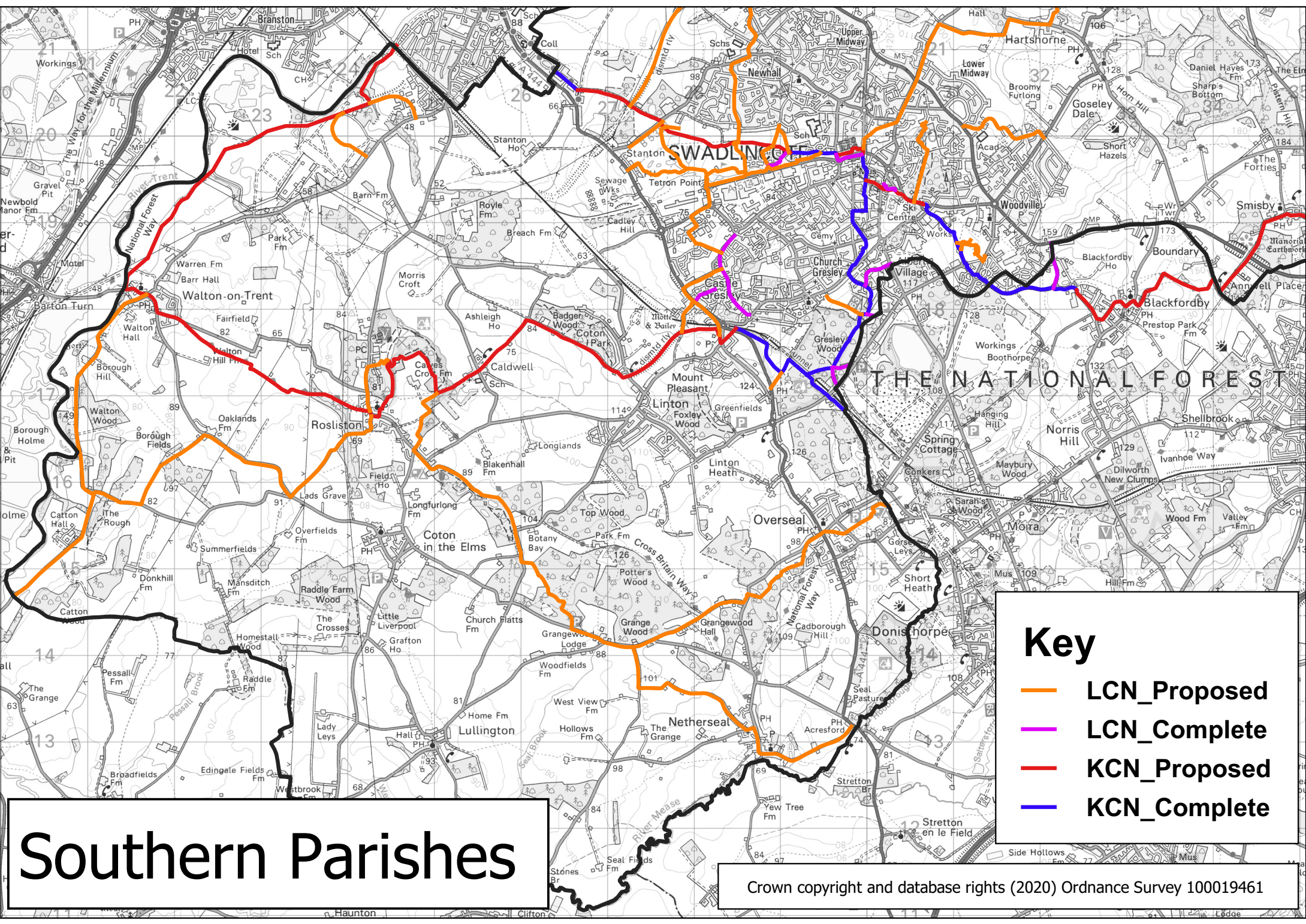
# Mid Parishes



### Key

- LCN\_Proposed
- LCN\_Complete
- KCN\_Proposed
- KCN\_Complete

(c) Crown Copyright. All Rights Reserved. 100019461 2024



**Key**

- LCN\_Proposed
- LCN\_Complete
- KCN\_Proposed
- KCN\_Complete

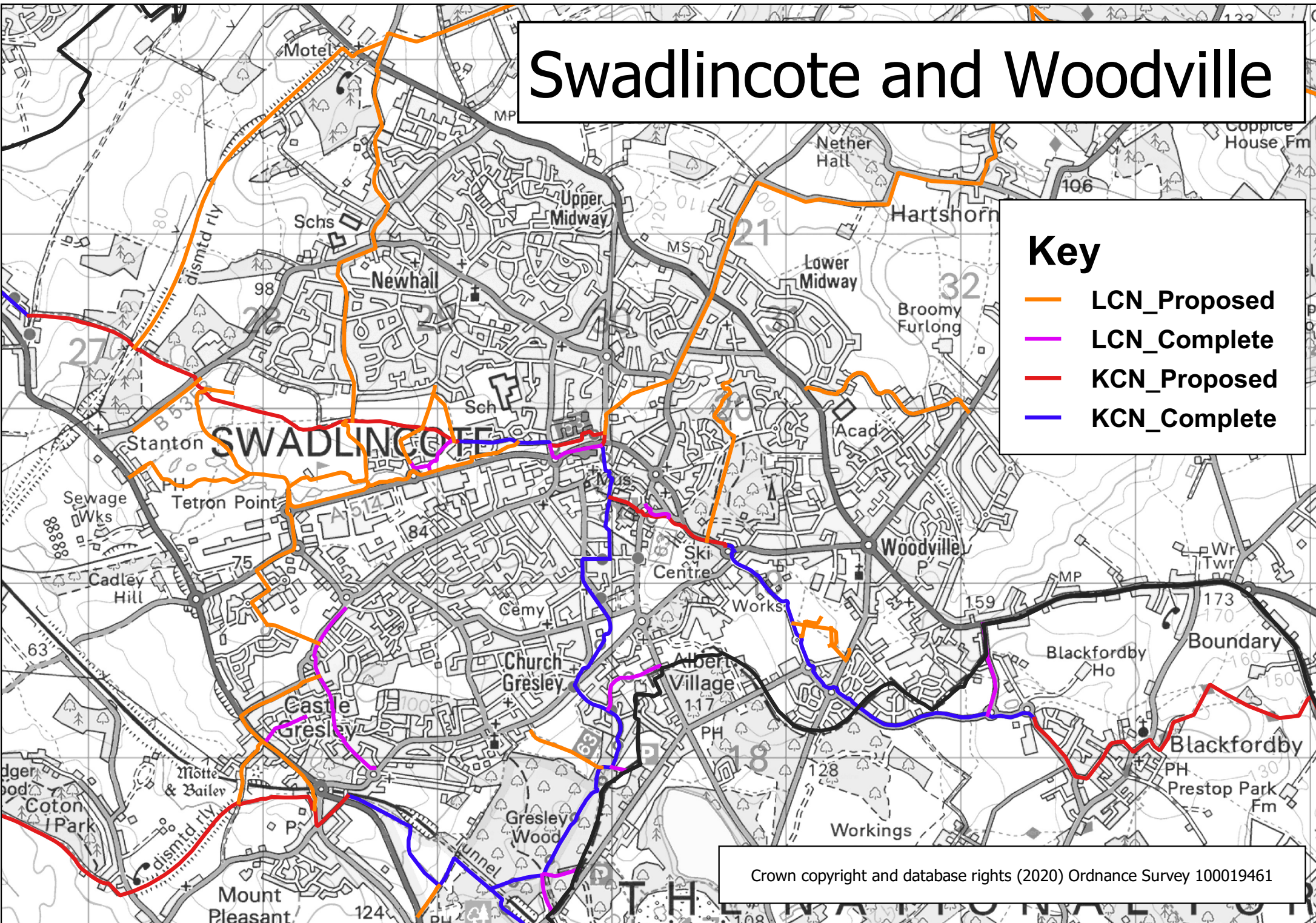
# Southern Parishes

# Swadlincote and Woodville

## Key

- LCN\_Proposed
- LCN\_Complete
- KCN\_Proposed
- KCN\_Complete

Crown copyright and database rights (2020) Ordnance Survey 100019461



## Obtaining alternative versions of this document

If you would like this document in another language, or if you require the services of an interpreter, please contact us. This information is also available in large print, Braille or audio format upon request.

**General enquiries:** Call 01283 595795 or visit [www.southderbyshire.gov.uk/contact](http://www.southderbyshire.gov.uk/contact)

Jeśli chcieliby Państwo otrzymać ten dokument w innym języku lub potrzebują Państwo usług tłumacza, prosimy o kontakt. Informacje te są również dostępne na życzenie w wydaniu dużym drukiem, w alfabecie brajla lub w wersji audio.

如果你需要这份文件的中文翻译，或者需要传译员的帮助，请联系我们。这些数据也备有大学体印本、盲人点字和录音带，欢迎索取。

ほかの言語でこの文書をご希望の場合、もしくは通訳サービスをご希望の場合はご連絡ください。

またこの情報は、ご要望により大きなプリント、点字版、また音声形式でも承っております。

यदि आपको ये दस्तावेज किसी दूसरी भाषा में चाहिये, या किसी दुभाषिये की सेवाओं की जरूरत है तो हमें सम्पर्क करने की कृपया करें। ये जानकारी माँग करने पर बड़े अक्षरों, ब्रेल या आडिओ के रूप में भी उपलब्ध करवाई जा सकती है।

ਜੇ ਤੁਹਾਨੂੰ ਇਹ ਦਸਤਾਵੇਜ਼ ਕਿਸੇ ਦੂਸਰੀ ਭਾਸ਼ਾ ਵਿਚ ਚਾਹੀਦਾ ਹੈ, ਜਾਂ ਕਿਸੇ ਦੁਭਾਸ਼ੀਏ ਦੀਆਂ ਸੇਵਾਵਾਂ ਦੀ ਲੋੜ ਹੈ ਤਾਂ ਸਾਡੇ ਨਾਲ ਸੰਪਰਕ ਕਰਨ ਦੀ ਕ੍ਰਿਪਾ ਕਰੋ ਜੀ ਇਹ ਜਾਣਕਾਰੀ ਮੰਗ ਕਰਨ ਤੇ ਵੱਡੇ ਅੱਖਰਾਂ, ਬ੍ਰੇਅਲ ਜਾਂ ਆਡਿਉ ਦੇ ਰੂਪ ਵਿਚ ਵੀ ਉਪਲੱਬਧ ਕਰਵਾਈ ਜਾ ਸਕਦੀ ਹੈ।



**South  
Derbyshire**  
District Council

اگر آپ یہ ڈاکیومنٹ کسی اور زبان میں چاہتے ہوں، یا اگر آپ کو کسی ترجمان کی خدمات درکار ہوں، تو براہ کرم ہم سے رابطہ کریں۔ درخواست کرنے پر یہ معلومات بڑے پرنٹ، بریل یا آڈیو فارمیٹ میں بھی دستیاب ہیں۔

[www.southderbyshire.gov.uk](http://www.southderbyshire.gov.uk)



@southderbyshiredc



@SDDC



@southderbyshiredc



@south-derbyshire-dc

Copyright South Derbyshire District Council 2024. Contents accurate at March 2024.

This report can also be viewed on our website [www.southderbyshire.gov.uk](http://www.southderbyshire.gov.uk)