

TEDDY'S BUSY ADVENTURES AT... ROSLISTON

TEDDY WALKS

Bertie Bear has gone to Rosliston Forestry Centre to explore the forest.

For the start of the trail, follow signs to the Lodges through the car park. Be careful on the drive.

1 He leaves the drive and goes through the gate and follows the track. There are lots of things to see already.

What can you see? Can you see the lamp posts? Bertie thinks they look like rockets.

Take the right fork in the path.

Bertie strolls on and sees lots of blackberry bushes to the left of the path.

When are blackberries out?

Follow the sign to Rosliston to continue the walk. Along the way Bertie looks at the trees and patterns they make. He waves his arms out and pretends to be a tree blowing in the wind. Bertie tries to jump along the path, from tree to tree but it's too far, so instead he tiptoes along like an elf or a fairy.

Can you copy Bertie and do different sized steps along the path?

2 Following the big path, Bertie can see the village of Rosliston in the distance. Eventually, he gets to Snowdrop wood and has a rest on the bench. He looks around and listens to the sounds around him. He can hear birds and see lots of trees but no snowdrops.

"I wonder when I will see the snowdrops?" he says.

"In the New Year," says a voice behind him.

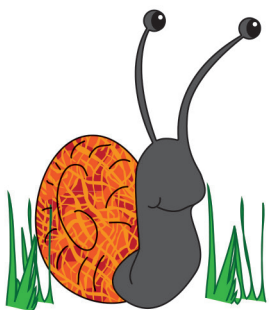
Bertie turns around to see one of the rabbits. "Let me show you some of our tiniest workers in the forest."

Bertie and the rabbit go deeper into Snowdrop Wood and start looking on the ground. They find spiders, worms, woodlice, ladybirds and snails.

Can you find any of these?

- Spiders
- Worms
- Woodlice
- Ladybirds
- Snails

(Look at them in their homes. Don't pick them up in case you squash them.)



Come out of the wood, back onto the path.

Fun Fact: Did you know that slugs have more teeth than a shark?



Can you pretend to be a mini beast as you walk along?

The rabbit also shows Bertie the entrance to a rabbit warren. Bertie finds sticks on the floor and decides to see what noises they make; he collects the sticks and rests them against a tree trunk then taps them with a smaller stick. Bertie spends time making up songs for the woodland animals whilst the rabbit says goodbye and goes back to his friends.

3 After Bertie's rest he walks on crossing over the stream.

Can you see any water under the bridge?

Bertie wonders which way to go. He goes straight on.

4 As Bertie wanders on, he sees a large overgrown grassed area to his left. He thinks this would be great to explore and take a rest in.

While resting on the grass, he looks up at the sky to see what shapes the clouds make.

Are there clouds in the sky today? What shapes can you see?

To exit the grassed area and continue the walk, follow the grassy path down and then take the right hand path up a slight slope, back up to the hard gravel path.



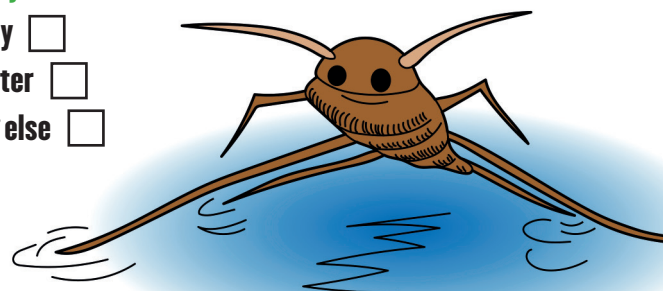
5 After walking a short way, Bertie notices a big den called a willow dome made out of sticks and decides to go inside to investigate.

Come out and turn left after playing in the dome.

6 Bertie follows the wavy willow fence along to the pond. He looks into the pond and sees dragon flies and pond skaters.

What can you see?

- Dragon fly
- Pond skater
- Anything else



COLOUR TEDDY IN...



7 At the crossroads, Bertie continues straight on. Up ahead of him, he can see the Observatory where people go to look at the stars at night. He follows the winding path and takes a look at the tree trail facts on posts along it.

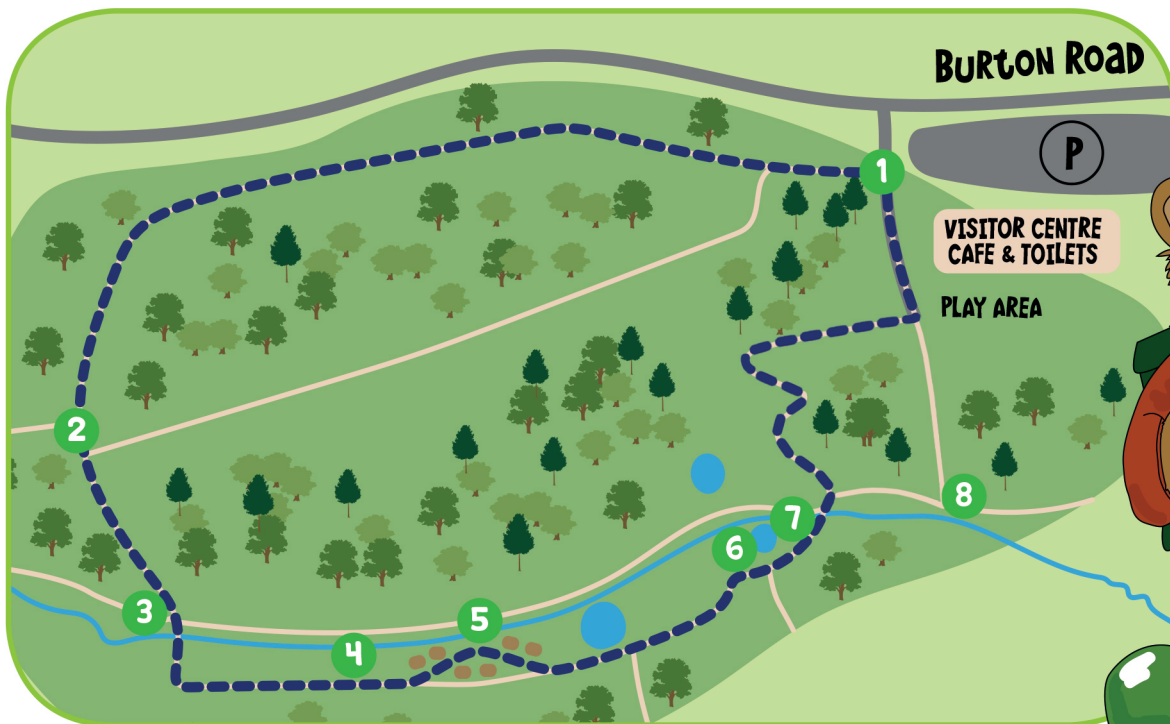
When he arrives at the Bird Hide, he decides to take a look inside. Staying very quiet, he sees blue tits, sparrows, and a few squirrels.

What can you see?

8 He continues on his walk, passing a sundial and a beautiful bench that looks like two giant acorns and leaves. He takes a shortcut through the wooded area, and follows the path back to the visitor centre.

When you reach the café/visitor centre you have finished the walk. Don't forget to pick up your Rosliston site map for more adventures.

**FOLLOW TEDDY'S
OTHER ADVENTURES AT...
SWADLINCOTE WOODLANDS,
HILTON GRAVEL PITS,
ELVASTON CASTLE
AND EUREKA PARK**



TO DOWNLOAD ANY OF OUR WALKS AND FOR MORE INFORMATION GO TO

www.southderbyshire.gov.uk